

# PANDORA

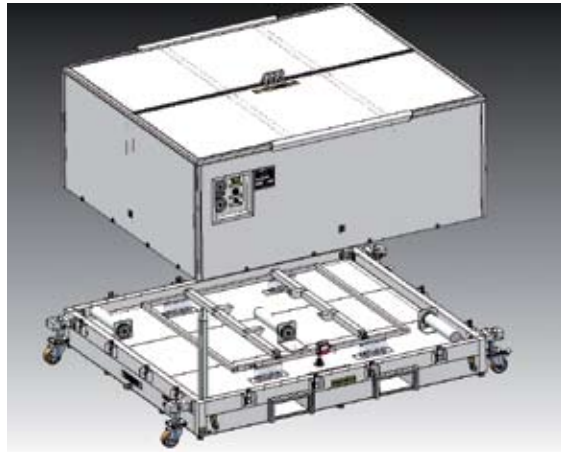
The transport solution for your satellite and sensitive equipments

Pandora is a family of multi-purpose transport containers, which are the best solution for transport and storage of satellites, satellite systems and components, instruments and, other sensitive equipment needing a controlled and monitored environment.

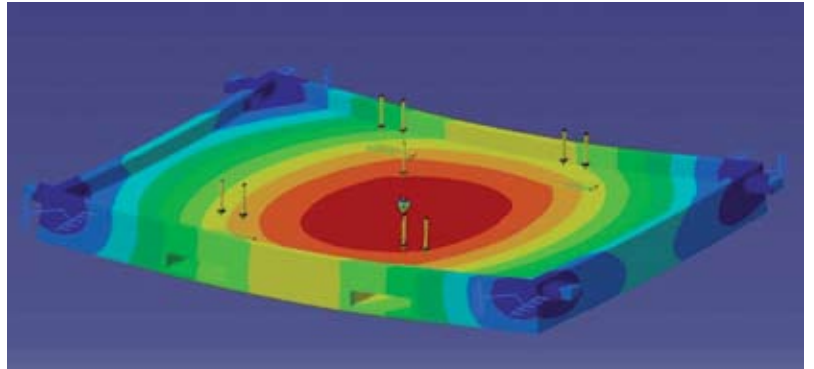
We design and develop the transport containers according to customer's requirements and demands. Designed for space instruments, Pandora could also be your solution for all the equipments and high value goods which require a monitored environment for transportation.

Pandora's main features are:

- Robust and lightweight body making use of a strong quadrangular bar structure with aluminum paneling covering.
- A Shock/Vibration Absorption system absorbing the vibration caused by transportation and protecting the equipment from incidental shocks during load/unload procedures.
- (optional) Integrated GN-2 Purging, Equalization and Relief system, allowing the creation of a clean internal environment to maintain the equipment's cleanliness and contamination level during transport and storage.
- (optional) Integrated closed circuit Environmental Control System (ECS). The ECS is customizable to the different transported equipment's requirements, and it maintains the internal environmental conditions such as temperature and humidity levels and the cleanliness level.
- Environmental monitoring, including recording capabilities for different parameters, such as acceleration, pressure, temperature and humidity up to 30 days, including a fast USB 2.0 interface for data acquisition.
- Standard hoisting and stowing points for secure ground, sea or air transportation according to the most widely used European standards (or other standards).
- (Optional) Removable polyurethane/Aluminium castors to allow the container to be used as a trolley over a variety of floors (basic version for concrete and PVC)



The design of the Transport Container PANDORA (EU01) for satellites



Structural Analysis



## Uses of Pandora

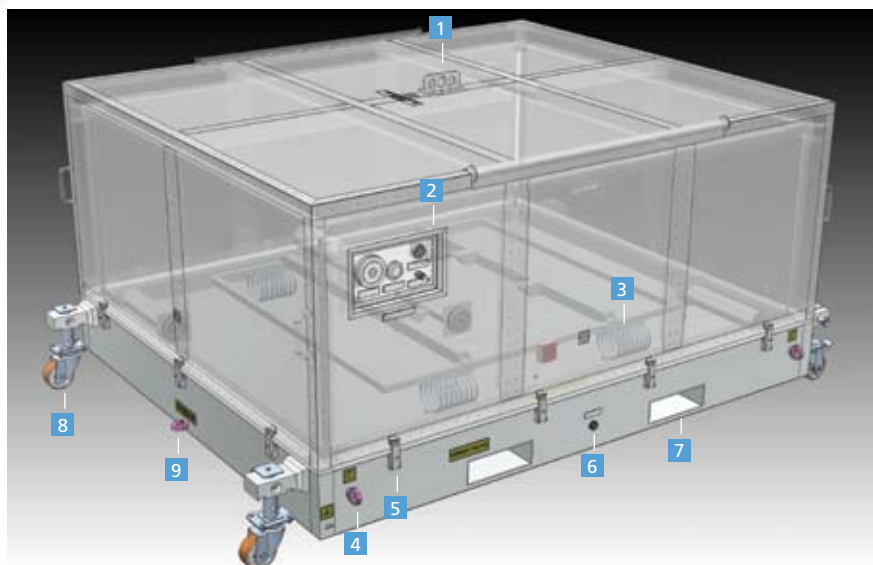
- Transport and storage of:
  - | Satellites
  - | Satellite systems and components
  - | Instruments
  - | Other Sensitive equipment needing a controlled and monitored environment
- Pandora can also be used for long term storage when external electrical power is provided.

## Technical Information

- valid for Mod. EU01

(other sizes available on request)

Standard External Dimensions (AxBxC)	2500 x 2200 x 1300 mm
Maximum Payload Dimensions (AxBxC)	1600 x 1500 x 600 mm
Environmental Control	Inner temperature: 0 – 35 °C Relative Humidity: 15 - 60% Data storage capacity: 30+ days, flash Data acquisition: USB 2.0 compatible ports
Vibration Damping (depending on payload mass)	Transport by road, sea and air
Compatibility with Clean Room conditions	



- 1 - Hoisting bracket
- 2 - Monitor panel
- 3 - Shock absorbers
- 4 - Hoisting point(s)
- 5 - Latches (closure)
- 6 - USB Interface
- 7 - Forklift provisions
- 8 - Castors
- 9 - Hauling point

